

COSTA BRAVA - GIRONA

**SEA OTTER
EUROPE**

Presented by
Continental

**EURO
MOBILITY
FESTIVAL**

**PARTICIPANT'S GUIDE
DEMOBIKE
SEA OTTER EUROPE 2024**

THE BIKE SHOW IN EUROPE

- 01** | How do I get to the festival and where do I park?
- 02** | What are the festival opening hours?
- 03** | What is the Demobike schedule?
- 04** | How do I enter the festival?
What should I do once I arrive?
- 05** | Which brands are taking part in the Demobike service?
- 06** | Where are the brands located?
- 07** | How do I reserve a bike?
When does pre-booking open?
- 08** | What are the Demobike circuits?
- 09** | FAQs

01

How do I get to the festival and where do I park?



If coming by car,
park here. 



**TAKE EXIT
6B FROM AP7**

Get there by bike or bus.
(free transfer every 20 minutes).

If you come by bike, you can leave
your bike in the festival's
free bicycle parking area



02

What are the festival opening hours?



20.09.24
12pm - 7:30pm



21.09.24
9am - 7:30pm



22.09.24
9am - 3pm



03

What are the demobike opening hours?



20.09.24
1pm - 7pm



21.09.24
10am - 7pm



22.09.24
10am - 2pm



04

How do I enter the festival?

What should I do once I arrive?



TICKETS ARE REQUIRED TO ACCESS THE FESTIVAL
To enter as a visitor, demobike and races

[GET YOUR TICKET HERE](#)

Once you arrive, head straight to the stand of the brand you have booked with. Or you can walk around the expo zone to find the different Demobike brands and their fleets of bikes, and decide which one you would like to try.



05

Which brands are taking part in the Demobike service?



Brand's list
updated

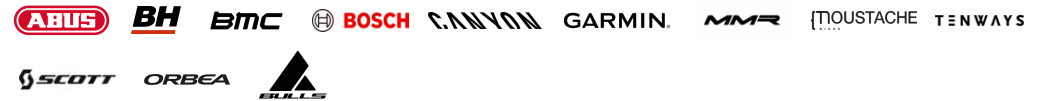


06

Where are the brands located?



RED ZONE



YELLOW ZONE



GREEN ZONE



PINK ZONE



BLUE ZONE



07

How do I reserve a bike?

- 1| Book on the website
- 2| You can book up to a maximum of two bikes (in the pre-booking period).
- 3| On the day of the festival, head straight to the brand's stand. You must bring valid photo ID with you (National ID/Foreigners' ID or passport). Once you have completed your test rides, you can do as many as you like, unlimited and free of charge.
- 4| Start your test ride!

08

What are the Demobike circuits?

BTT

eBIKE

ROAD

URBAN

GRAVEL

There are short-, medium- and long-distance circuits and circuits for different disciplines. Some are located within the festival grounds and others 300 m from the festival.



DEMO BIKE



MTB TRACKS

- 1 | **MTB A**
8KM 150MD+ (30')
- 2 | **MTB B**
12KM 200MD+ (45')
- 3 | **MTB C**
1,21KM 117MD+ (10')



E-BIKE TRACK

- 4 | **EBIKE**
0,47KM (5')



ROAD TRACK

- 5 | **ROAD**
24KM 319MD+ (45')



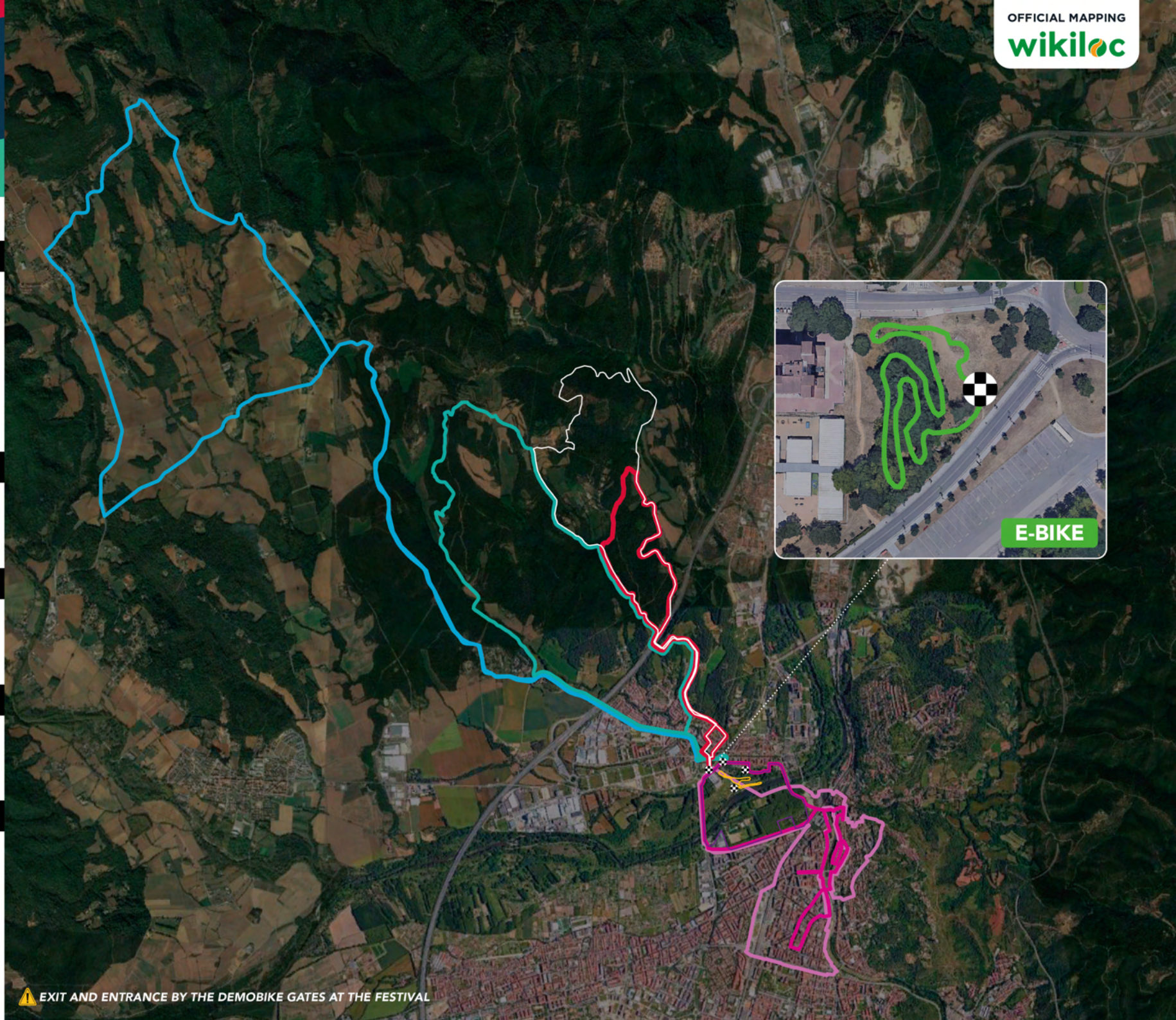
GRAVEL TRACK

- 6 | **GRAVEL**
12KM 144MD+ (30')



URBAN TRACKS

- 7 | **URBAN A**
3,6KM (15')
- 8 | **URBAN B**
8KM (30')
- 9 | **URBAN C**
10,5KM (40')



08

What are the Demobike circuits?



8KM-150MD+
30'



12KM-200MD+
45'



1,21KM-300MD+
50'

DOWNLOAD IT ONTO YOUR

GARMIN[®]

BTT

/for MTB, eMBT, enduro and full suspension bikes
/circuit marking
/GPS route available
/powered by **wikiloc**



08

What are the Demobike circuits?



24KM-300MD+
45'



12KM-150MD+
30'

DOWNLOAD IT ONTO YOUR
GARMIN[®]

ROAD GRAVEL

/for road/gravel bikes
/circuit **NOT** marked
/GPS route available
/powered by **wikiloc**
/circuit with open traffic



08

What are the Demobike circuits?



3,6KM
15'



8KM
30'



10,5KM
40'

DOWNLOAD IT ONTO YOUR
GARMIN®

URBAN

/for urban bikes
/circuit **NOT** marking
/GPS route available
/powered by **wikiloc**



08

What are the Demobike circuits?



500M
3'

DOWNLOAD IT ONTO YOUR
GARMIN®

eBIKE

/for ebikes
/circuit marked



What is the opening date for bookings?

- | On Wednesday 04.09.24. Not all brands offer this option. The platform will clearly indicate this.
- | For brands that offer booking, you will be able to book your bike from 04.09.24 via the Demobike platform.



EXCLUSIVE OPENING!

Reservations for the **CANYON** test bikes will open before the rest, **02/09/24**.



Can I book on the day of the test ride?

Yes, although the organisers recommend that you book beforehand via the official platform.

[Booking now here.](#)

Concerning bookings



How many bikes can I reserve during booking?

You can reserve up to a maximum of 3 bicycles on the platform.
So choose them well!

**Concerning limits
to the number of bicycles**



How many bikes can I test ride during the course of Sea Otter Europe?

There is no limit!

Just make sure that each bike is available.

⚠ Please note! You can only have a total of 3 bikes reserved in your profile with the test rides still to be completed. Therefore, if you try to book a 4th bike, the platform will not allow you to do so. You must first complete your 3 previous test rides.

Concerning limits to the number of bicycles



What documentation do I need to bring?

You must present a national photo ID card, Foreigners' ID card or passport. Photocopies or the ID documents of persons other than those taking part in the service will not be accepted.

**Concerning
the documentation**



How long does each test ride last?

Between 30 min and 60 min, depending on the time slots established by the brands. This will give you enough time to prepare the bike, complete the route and return it comfortably.

Test rides will either be completed with or without a guide. This will be a matter of choice for each brand.

It is for this reason that the circuits are minimally signposted.



I know a route that is not part of the Demobike circuit, can I deviate and create my own route?

No. For safety reasons and to ensure that the test rides are carried out within the scheduled time slots, only the circuits authorised by the organisers should be used.



Are all Demobike models available on the platform?

No. DEMOBIKE Sea Otter Europe is a service that the organisers make available to brands and visitors so that the activity can be carried out in the most agile and comfortable way possible.

Therefore, if you do not find the brand you are interested in when registering on the Demobike platform, it may be that:

- a) they are not doing bike test rides
- b) they are not using the platform

In the latter case, go directly to their stand for more information.

**Concerning
demobike brands**



Do I have to bring my own equipment
(helmet, sportswear, shoes)?

| Yes, you must bring your own equipment. However, GARMIN will offer a rental service pg GPS (free) and ABUS will also offer a rental service of HELMETS (free).

**Concerning the
necessary material**



What happens if I don't have my ID card/passport with me?

- | You will not be able to take part in Demobike.

Is there any insurance cover in case of an accident?

- | **Yes,** all Demobike participants will have insurance that covers the cyclist in case of an accident. As long as it is within the circuits marked by the organisation.

**Concerning
possible incidents**



What happens if I am late for my reservation?

You will lose your reservation and will have to rebook the bike depending on availability. Some brands wait up to a total of 10 minutes. Please be punctual.

Concerning possible incidents



Will there be a cloakroom service?

No. Each person should be responsible for their personal belongings.
Some brands may have a cloakroom space at their stand.

Will there be changing rooms with showers?

No.

Will there be a bicycle storage service?

Yes, bicycle storage is located in the festival area and will be properly signposted. The service is free.



OUR SPONSORS

INSTITUTIONAL SPONSORS



HOSTING DESTINATION



TITLE SPONSOR



GOLD SPONSORS



SILVER SPONSOR



BRONZE SPONSORS



STRATEGIC PARTNERS



OFFICIAL BIKE WASH



OFFICIAL MAPPING



OFFICIAL BIKE PARK



ORGANIZING

